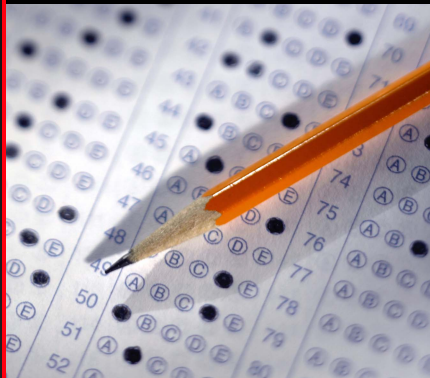


Bursting the bubble: Lexmark simplifies OMR to help schools score critical time and cost savings.



As schools comply with No Child Left Behind, the use of optical mark recognition (OMR) or “bubble sheet” test forms has increased significantly. Schools must purchase expensive pre-printed testing forms, store and distribute them, then ship

them to a centralized location for scanning and scoring after the test is administered. The result: added supplies and processing costs plus critical delays in reporting and evaluating test scores. In addition, acquiring and supporting a single-task OMR device is a luxury most schools can no longer afford.

Since NCLB results are critical to a school’s financial well-being, a solution that speeds and simplifies the administering of tests and the processing of test scores while decreasing OMR costs can be a valuable school asset.

Lexmark fills in the blanks.

Lexmark’s Testing & Assessment solution lets teachers or administrators prepare test materials, scan and score tests, create reports and analyze data to use to prepare for future exams—all from a single multifunction printer conveniently located near the classroom. This robust, flexible solution enables schools to print their own bubble sheets on plain paper, eliminating costly pre-printed forms and allowing control over form design. As an added benefit, the information can be exported to many SIS systems and electronic gradebooks. The system can also create, print, score and analyze parent, student or community surveys, attendance sheets, registration forms and other school forms.

Lexmark’s Testing & Assessment Solution provides real-time, data-driven analysis on student performance. It gives teachers and administrators the ability to create plain-paper bubble for testing.

- Saves time
- Saves money
- Teacher friendly

Lexmark is a proven leader in improving school processes. And yes, Lexmark can help your school or district.

www.lexmark.com

Lexmark and Lexmark with diamond design are trademarks of Lexmark International, Inc. registered in the United States and/or other countries. All other trademarks are the property of their respective owners. © 2006 Lexmark International, Inc. 740 W. New Circle Rd., Lexington, KY 40550